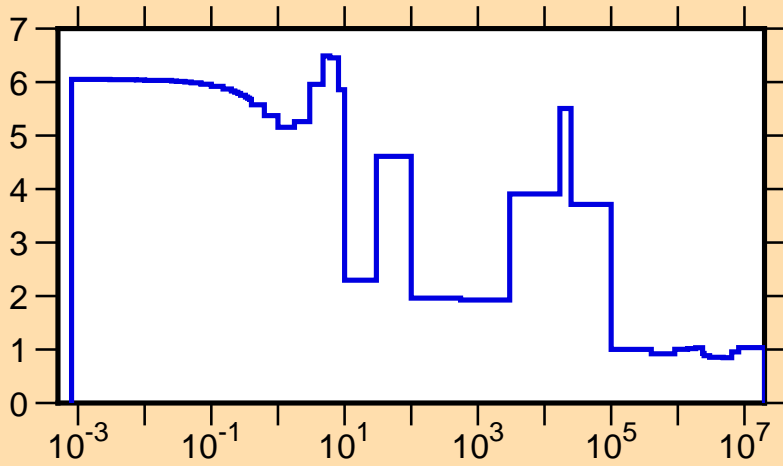
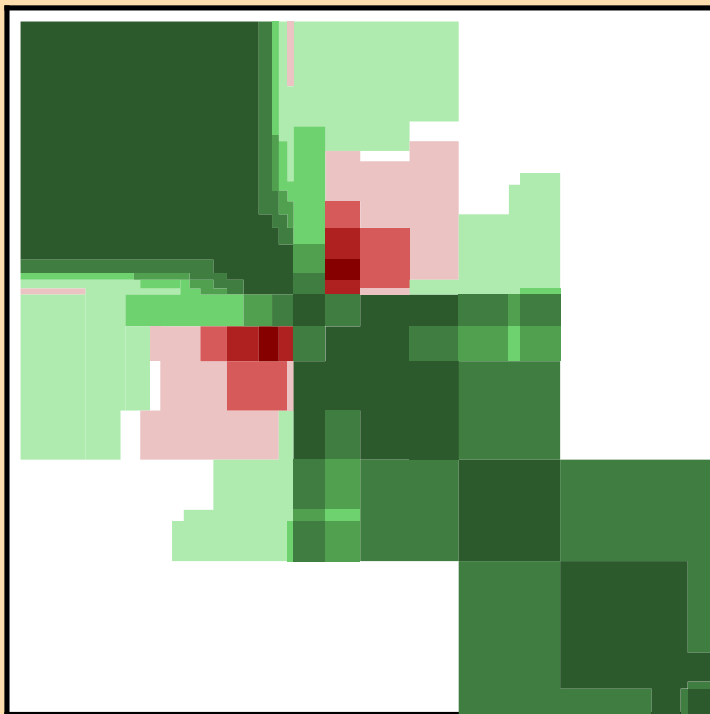


$\Delta\sigma/\sigma$ vs. E for $^{186}\text{W}(n,\text{tot.})$

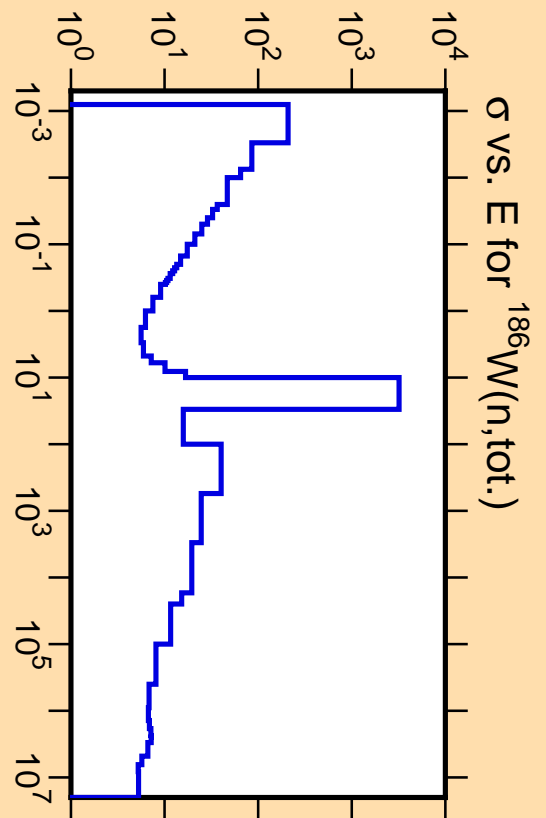


Ordinate scales are % relative standard deviation and barns.

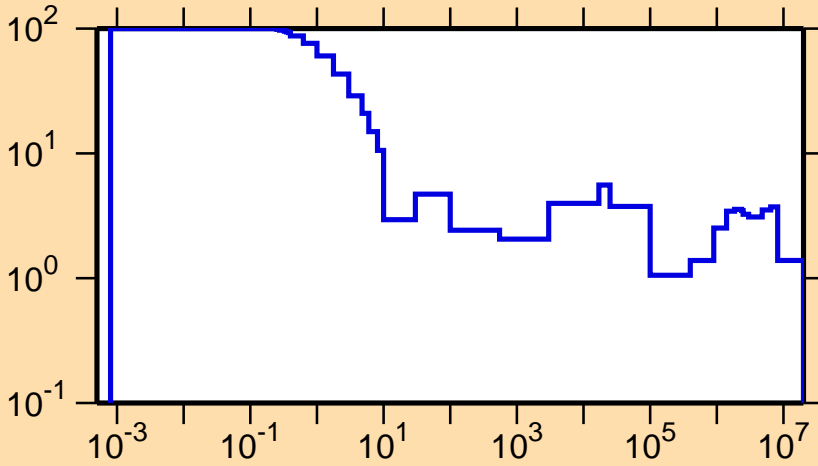
Abscissa scales are energy (eV).



Correlation Matrix



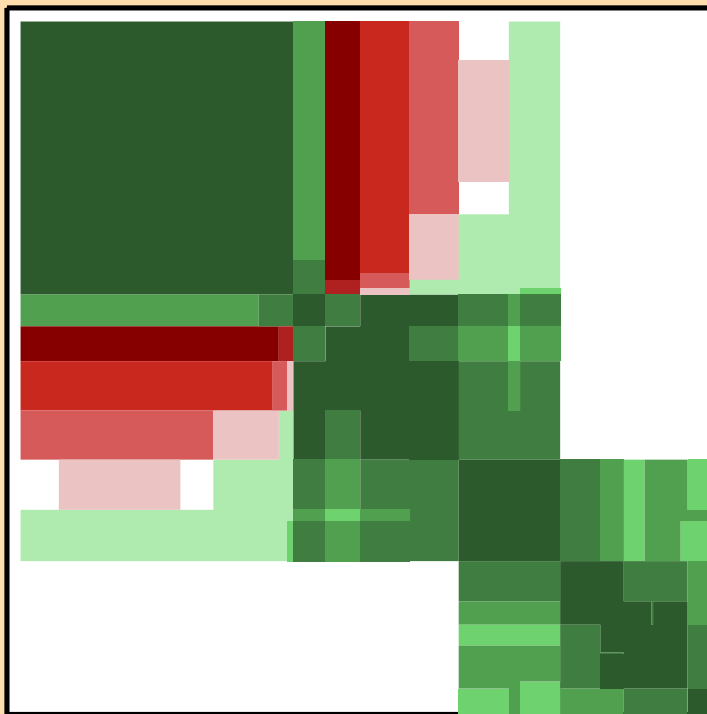
$\Delta\sigma/\sigma$ vs. E for $^{186}\text{W}(n,\text{el.})$



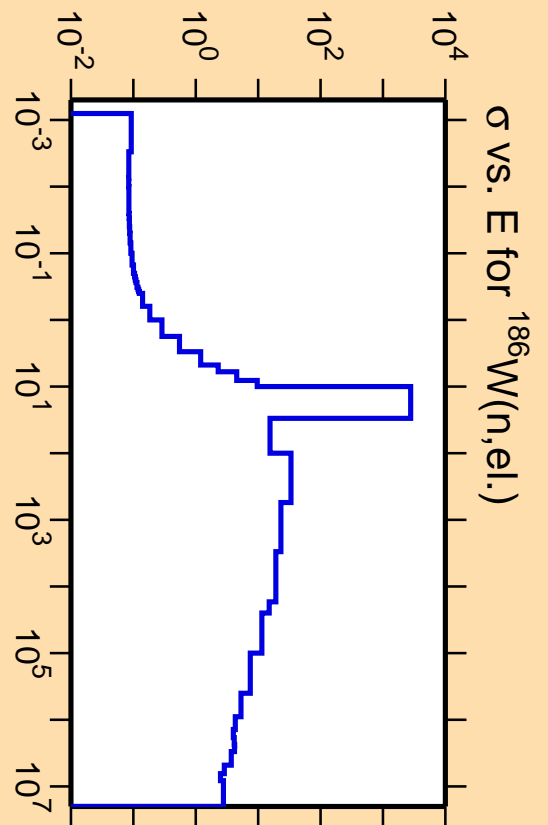
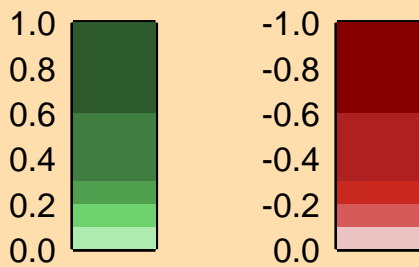
Ordinate scales are % relative standard deviation and barns.

Abscissa scales are energy (eV).

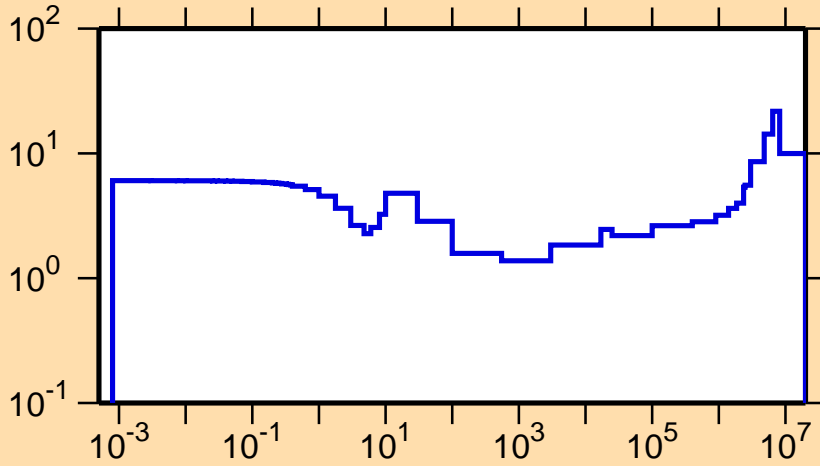
Warning: some uncertainty data were suppressed.



Correlation Matrix

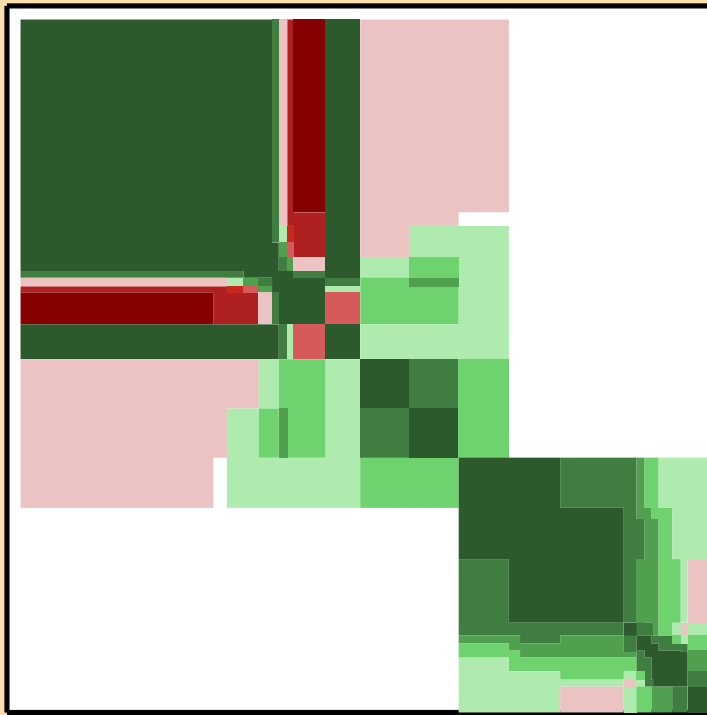


$\Delta\sigma/\sigma$ vs. E for $^{186}\text{W}(n,\gamma)$



Ordinate scales are % relative standard deviation and barns.

Abscissa scales are energy (eV).



Correlation Matrix

